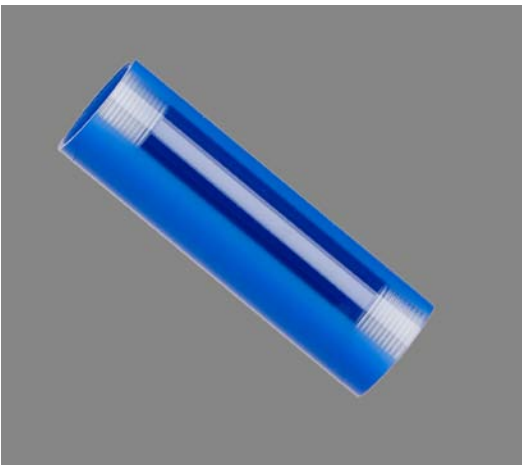




## SPECIFICATIONS

<b>Product No.</b>	<b>PB-100</b>
<b>Material</b>	<b>Co-extruded Polycarbonate</b>
<b>Weight</b>	<b>1.2 oz (without top cap and cone tip)</b>
<b>Length</b>	<b>4" long total length</b>
<b>Color</b>	<b>Body brilliant opaque blue with clear transparent view section the length of body.</b>
<b>Threads</b>	<b>Internal 1 1/16 -18 threads both ends. Body compatible with most half-cell/electrode top caps and bottom caps/tips.</b>
<b>Contact Information</b>	<p><b>For More Information:</b>            Jason Rine            P. O. Drawer 190            Clarksburg, WV 26302-0190            Toll free 877.624.9700            Fax 304.622.0981            E-mail <a href="mailto:j.rine@mSESinc.com">j.rine@mSESinc.com</a>  <a href="http://www.mSESproducts.com">www.mSESproducts.com</a></p>

## FEATURES



- The reference electrode body is co-extruded in two colors: brilliant opaque blue and clear transparent.
- The opaque blue provides a protective sun shield to eliminate degeneration of the copper sulfate solution.
- The body contains a clear transparent section extending the length of the body to allow for visual inspection of the condition and levels of the copper sulfate solution.
- The polycarbonate body is highly resistant to damage from misuse, dropping, improper storage and everyday use.